
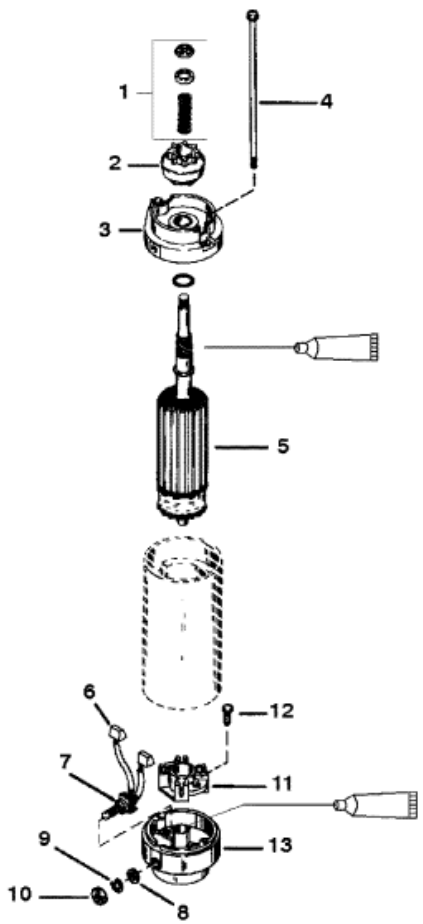


**Quicksilver Lubrication/Sealant
 Application Points**

 SAE 10W Oil (Obtain Locally)



Parts List						
Ref	Class	Part	Description	Qty	Comment	Footnote
-	50	66015	STARTER MOTOR ASSEMBLY	1		
1		90643	DRIVE KIT	1		
2		68575	DRIVE ASSEMBLY	1		
3		75660	PLATE	1		
4	10	75385	THRU BOLT	2		
5		75386	ARMATURE	1		
6		75384	BRUSH SET	1		
7	23	57387	BUSHING	1		
8		NSS	WASHER (AMER. BOSCH #WA-	1		10
9	13	26992	LOCKWASHER	1		
10	11	20890	NUT	1		
11		61787	BRUSH HOLDER	2		
12		NSS	SCREW (AMER. BOSCH #024	2		10
13		15386	END CAP	1		